

Trip My Soul
presents



Wazyara

BHUGYAL TREK



AN IMMENSE EXPERIENCE THAT YOU WILL NOT FORGET

ONLY WITH TRIP MY SOUL



WWW.TRIPMYSOUL.CO.IN



8178613438



ABOUT US



TRIP MY SOUL

Established in 2015, Trip My Soul has already built up a reputable empire in the world of travel and trekking by providing unbelievable packages, offers, discounts like none other. Travel getaways to 150+ destinations that heal the soul and a flawless online experience like never before, can only be experienced with TripMySoul. Our 50000+ happy customers can vouch for us. We are committed to providing the finest travel experience for you as we do for 8000+ thrill-seekers every year.

Trip My Soul presents a variety of activities that you, your family and your neighbour's family can partake in. In short, there is something for everyone with us. People who want to become one with nature can opt for our trekking, weekend trekking and camping packages. Those who are looking to get their heart pumping can choose to soar through the sky in a paraglider or brave the turbulent waters with River rafting or bungee jump from great heights or all three.



ITINERARY

Know your trip better with Itinerary

Day 1 : Rishikesh To Natin Village

We will pick you up at 6:00 AM from Rishikesh TTH Head Office (Tapovan) Station for a 7-hour long journey to Natin. Natin is a pleasant village famous as the base camp of the Dayara Bugyal trek. It is around 38 km away from Uttarkashi. The village flourishes with lush greenery. Bhagirathi River flows with you throughout the way up to the village.



Day 2: Natin to Gui



Start early in the morning with energized spirit to embark on the actual trek. The trail is a walk through the jungle. There are silver and gold oak trees all around. The route to the campsite is well marked and the campsite at Gui always remains in line of sight. The trail is easy and ascends gradually. It will take around 4-5 hours to reach the next resting point.

Day 3: Gui to Chilapada

Today is an easier day comparatively. The trail rises slowly as the forest clears and you reach the next camping site of Chilpada. It will be a small trek. The trail follows out of the Gui campsite and onwards towards Dayara. As you climb out of Gui campsite, the mountains on the other side that were hidden come closer into view. You can find a flowing stream next to the camping site. Carrying one liter of water is enough for today.



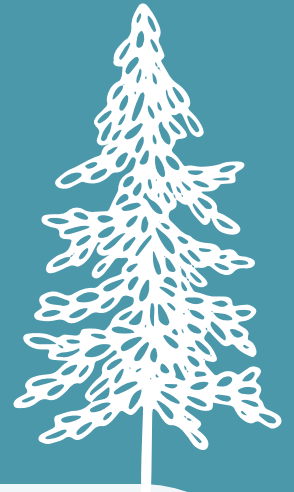


ITINERARY

Know your trip better with Itinerary

- Day 4: Chilpada To Dayara Top And Trek To Nayata

Summit day is finally here. Today you will go all the way to the Dayara top and return to the campsite. It's an easy to moderate trail. Carry enough water for the way as there is only one water source near the top. With the first few steps under the forest, the trail gradually opens up leading to vast meadows. Hereafter, you will find yourself trudging on the meadows blossomed with colours.



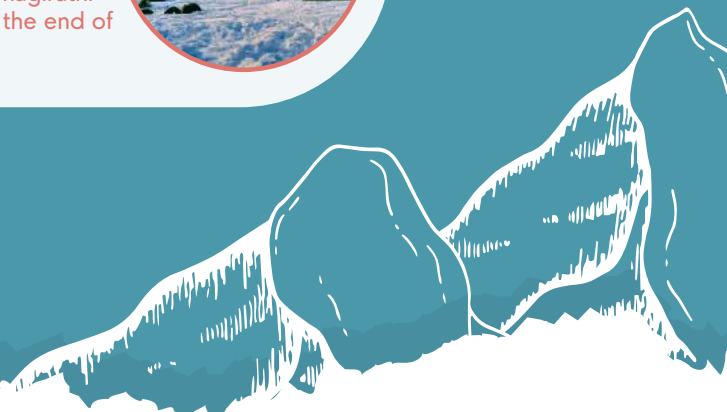
- Day 5: Nayata to Natin Village

The journey amidst the mountains of Dayara Bugyal comes to an end today. Wake up early to get packed up to descend back to Natin. It is a 5 km distance from Nayata to Natin and takes about 3 hrs. From the Nayata campsite follow the main trail to Dayara that you came in yesterday, the trail is canopied by a dense forest cover, so it will be a little cool in this part.



- Day 6: Natin to Rishikesh

Have a final cup of morning tea in Natin. Cherish the goodbyes with your fellow trekkers. After taking a memorable group picture, get into the cab that will ride you back to Dehradun at 6:30 AM. This will be a 7-hour long ride, from between the mountains, valleys, and with the Bhagirathi river that was also a guide to you throughout the trek, marking the end of your incredible Dayara Bugyal trip.





INCLUSIONS

- Airport/Railway Station pickup and transfer
- Accommodation in trippel rooms with attached toilet and bathroom.
- Breakfast & Dinner.
- Transportation ~ Non ac vehicle during hill journey
- All taxes

EXCLUSIONS

1. Any kind of personal expenses.
2. Food during the transit.
3. Insurance.
4. Anything not specifically mentioned under the head
5. Any kind of emergency evacuation charges





THINGS TO CARRY ON

Rucksack/Backpack
Trekking Poles
First Aid Kit
Rain Gear (Upper & Lower)
Camping Slippers
Sun Cap
Thermals (Upper & Lower)
T-Shirts
Fleece Jacket
Water Bottle
Sunscreen
Lipbalm
Personal Toiletries
Cameras/GoPro
Power Bank
N-95 Masks & Sanitiser
Valid I'D

THINGS ON RENTAL

Trekking Shoes (*Available on rent 500rs*)
Headlamp (*rent 100rs*)
Sunglasses (*for sell 200rs*)
Rain Cover (*rent 100rs*)
Woollen Cap (*sell 200rs*)
Buff (*sell 150rs*)
Down Jacket (*rent 500rs*)
Waterproof Gloves (*sell 150*)
Trek Pants (*rent 250rs*)
Socks (*sell 150rs*)

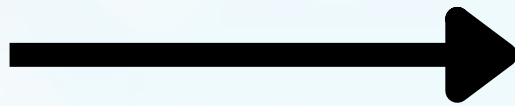




DAYARA BHUGYAL TREK 6DAYS RS 8000/-



UPI ID: tripmysoulteam-4@okaxis



PAYMENT MODES



9720942463

- **GROUP DISCOUNT AVAILABLE (5 + MEMBERS**
- **DAILY DEPARTURES AVAILABLE FROM NOVEMBER TO**
- **APRIL**
- **CUSTOMISE TREK AVAILABLE**



CANCELLATION POLICY

- **IF CANCELLATION ARE MADE 30 DAYS BEFORE THE DATE OF TRAVEL THEN 25.0% OF TOTAL TOUR COST WILL BE CHARGED AS CANCELLATION FEES**
- **IF CANCELLATION ARE MADE 15 DAYS TO 30 DAYS BEFORE THE DATE OF TRAVEL THEN 50.0% OF TOTAL TOUR COST WILL BE CHARGED AS CANCELLATION FEES**
- **IF CANCELLATION ARE MADE 0 DAYS TO 15 DAYS BEFORE THE DATE OF TRAVEL THEN 100.0% OF TOTAL TOUR COST WILL BE CHARGED AS CANCELLATION FEES**

REFUND POLICY

- **THE APPLICABLE REFUND AMOUNT WILL BE PROCESSED WITHIN 10 BUSINESS DAYS.**

CONFIRMATION POLICY

- **AS SOON AS YOU PAY, YOU WILL RECEIVE A CONFIRMATION EMAIL FROM TRIP MY SOUL.**
- **THE REMAINING AMOUNT WILL BE COLLECT ON ARRIVAL**